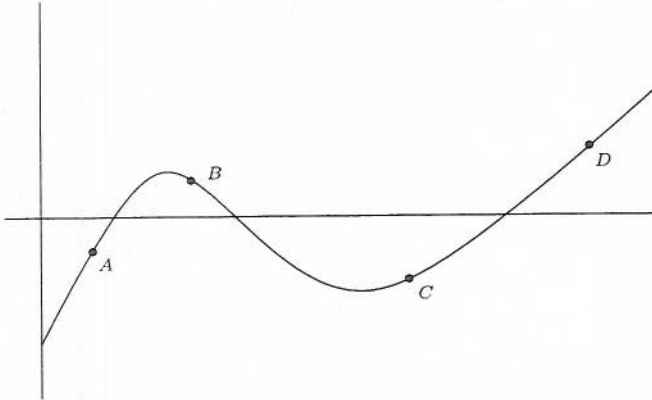


Quiz #14

Name: Key

You must show your work to get full credit.

(1) For the function with the following graph:



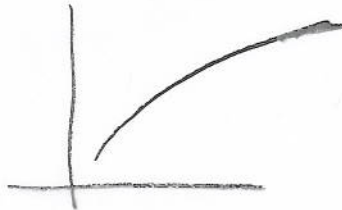
1 pt (a) At which of the labeled points is f positive? B, D

1 pt (b) At which of the labeled points is f' positive? A, C, D

1 pt (c) At which of the labeled points is f'' positive? C, D

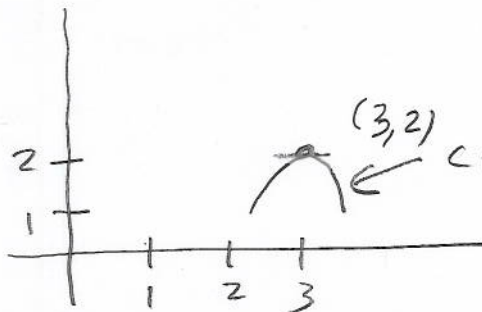
(2) Draw the graph of a function that is increasing at a decreasing rate.

1 pt That is $f' > 0$ and $f'' < 0$.



(3) Draw the graph of a function that has $f(3) = 2$, $f'(3) = 0$ and $f''(3) < 0$.

1 pt.



concave down as $f'' < 0$ near 3.