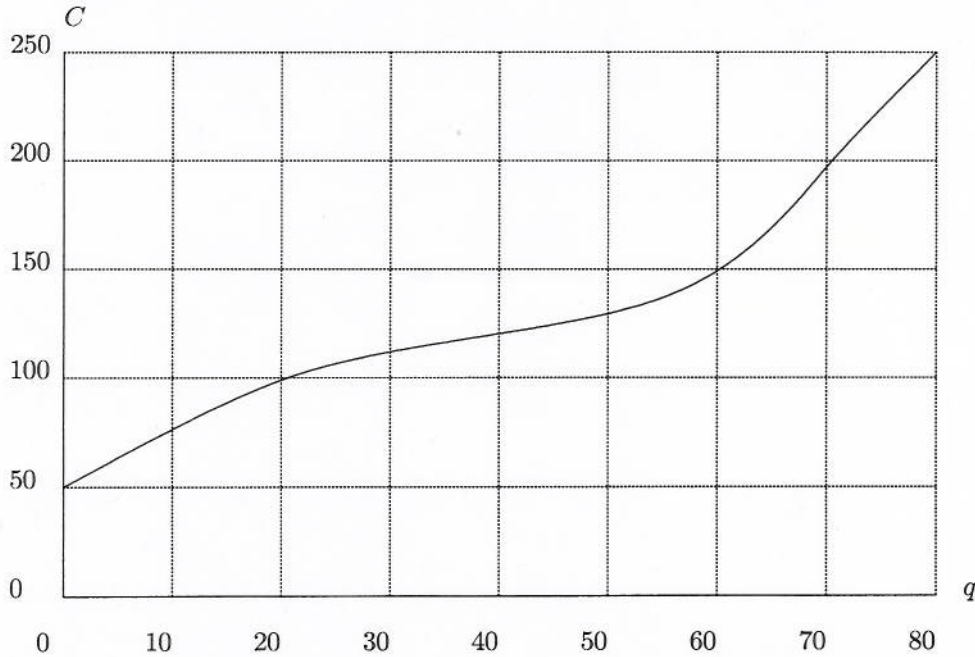


Quiz #1

Name: Key

You must show your work to get full credit.

The following figure gives the graph of C as a function of q . That is $C = f(q)$.



(1) What is the value of $f(0)$. $f(0) = \underline{50}$

(2) What is the value of $f(20)$? $f(20) = \underline{100}$

(3) What is the solution to $f(q) = 150$? $q = \underline{60}$