

(1) For the function shown in Figure 1

1 pt (a) At which of the labeled points is f largest? A

1 pt (b) At which of the labeled points is f' largest? C

1 pt (c) At which of the labeled points is $f' = 0$? D

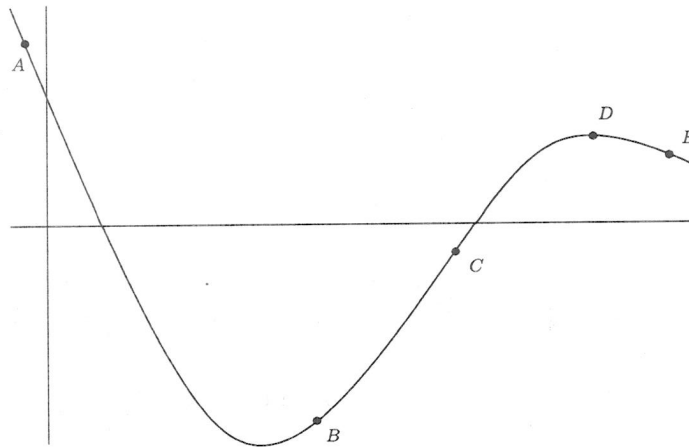


FIGURE 1

2 pts (2) Figure 2 gives the graph of a function. Draw the graph of its derivative on the same axis.

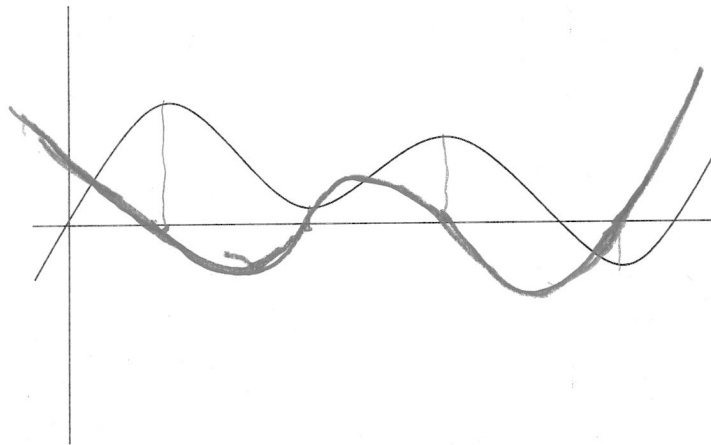


FIGURE 2