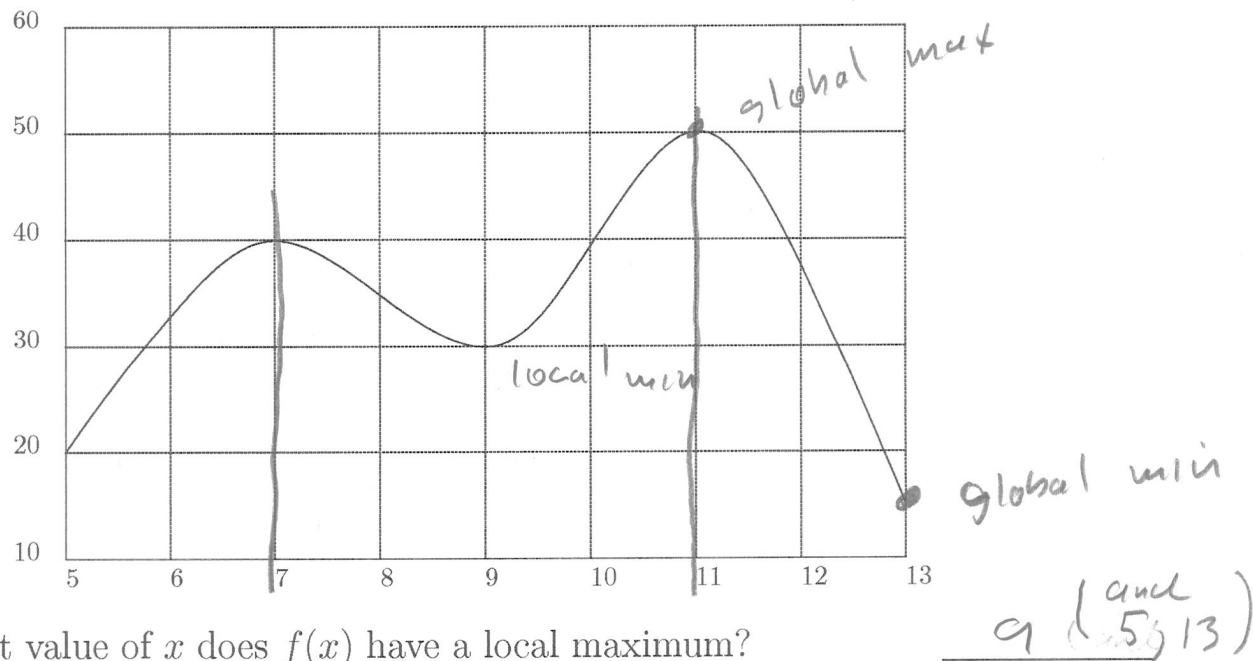


Quiz #23

Name: Key

You must show your work to get full credit.

The following is a graph of $y = f(x)$.



1. For what value of x does $f(x)$ have a local maximum?

2. If we consider the full interval $5 \leq x \leq 13$

What is the global maximizer?

What is the global maximum?

What is the global minimizer?

What is the global minimum?

3. If we consider just interval $7 \leq x \leq 11$

What is the global maximizer?

What is the global maximum?

What is the global minimizer?

What is the global minimum?

9 (and 5, 13)

11

50

13

15

11

50

9

30