

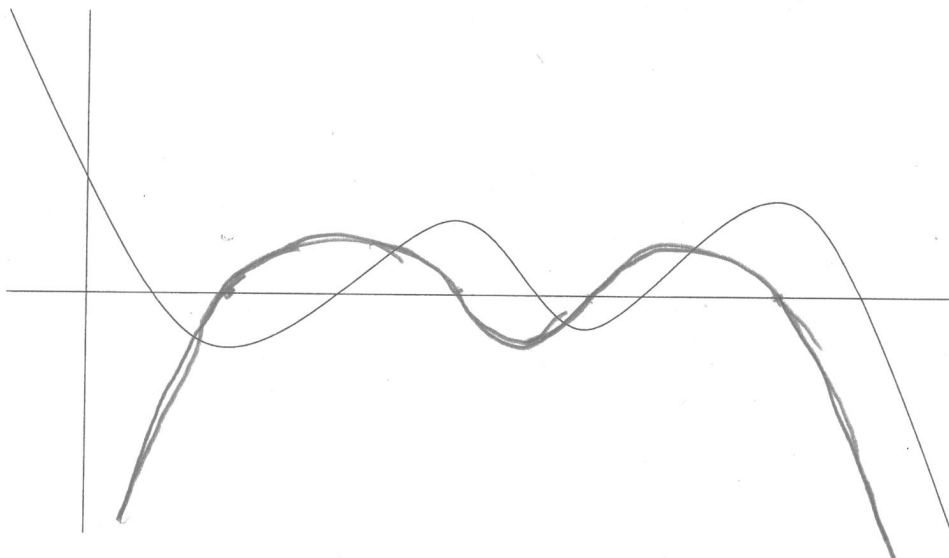
Mathematics 122

Quiz # 6

Name: Key

You must show your work to get full credit.

1. The following is the graph of a function $f = f(x)$. On the same axis draw the graph of the derivative function $y = f'(x)$.



2. For the points labeled on the graph below

At which ones is $f(x)$ positive? A, E

At which ones is $f'(x)$ positive? A, D

At which ones is $f'(x) = 0$? C

At which one is $f'(x)$ the largest? D

At which one is $f'(x)$ the smallest (i.e. most negative)? B

