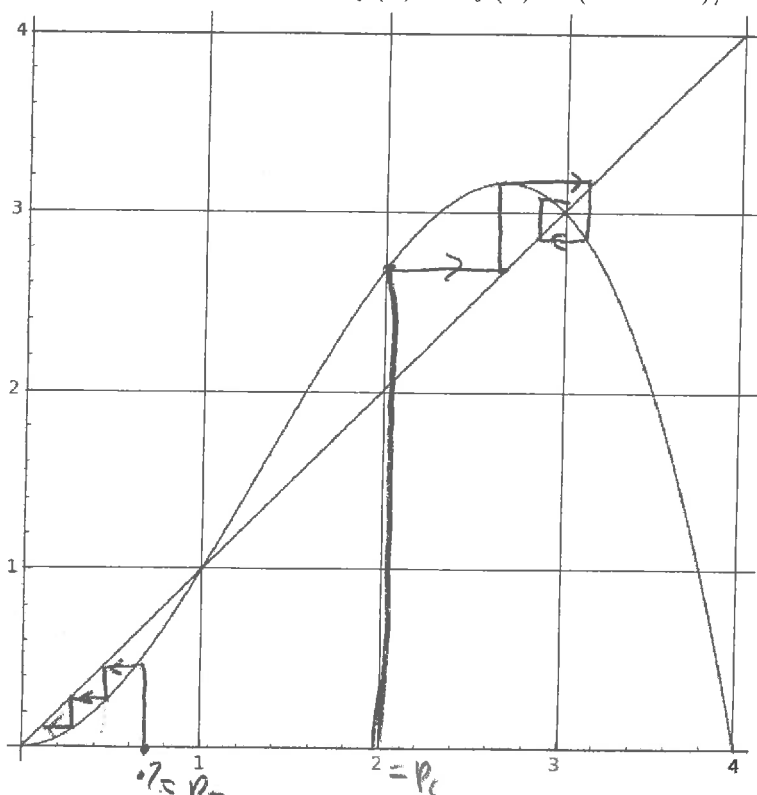


Quiz 7

Name: key

You must show your work to get full credit.

The following is the graph of $y = x$ and $y = f(x)$ for $f(x) = (4x^2 - x^3)/3$ on the same axis.



We will look at the discrete dynamical $P_{t+1} = f(P_t)$.

1. (a) First consider the case where $P_0 = .7$. Find the following $P_1 =$.539

$P_2 =$.335

$P_3 =$.137

- (b) Draw the cobweb starting at $P_0 = .7$ and give an approximation of P_{20} .

From the picture we see it
steps down to 0.

$P_{20} \approx$ 0

2. (a) Now consider the case $P_0 = 2$. Find the following

$P_1 =$ 2.667

$P_2 =$ 3.160

$P_3 =$ 2.795

- (b) Draw the cobweb starting at $P_0 = 2$ and give an approximation of P_{50} .

Here it spirals into 3

$P_{50} \approx$ 3